



Elite Resident Investment

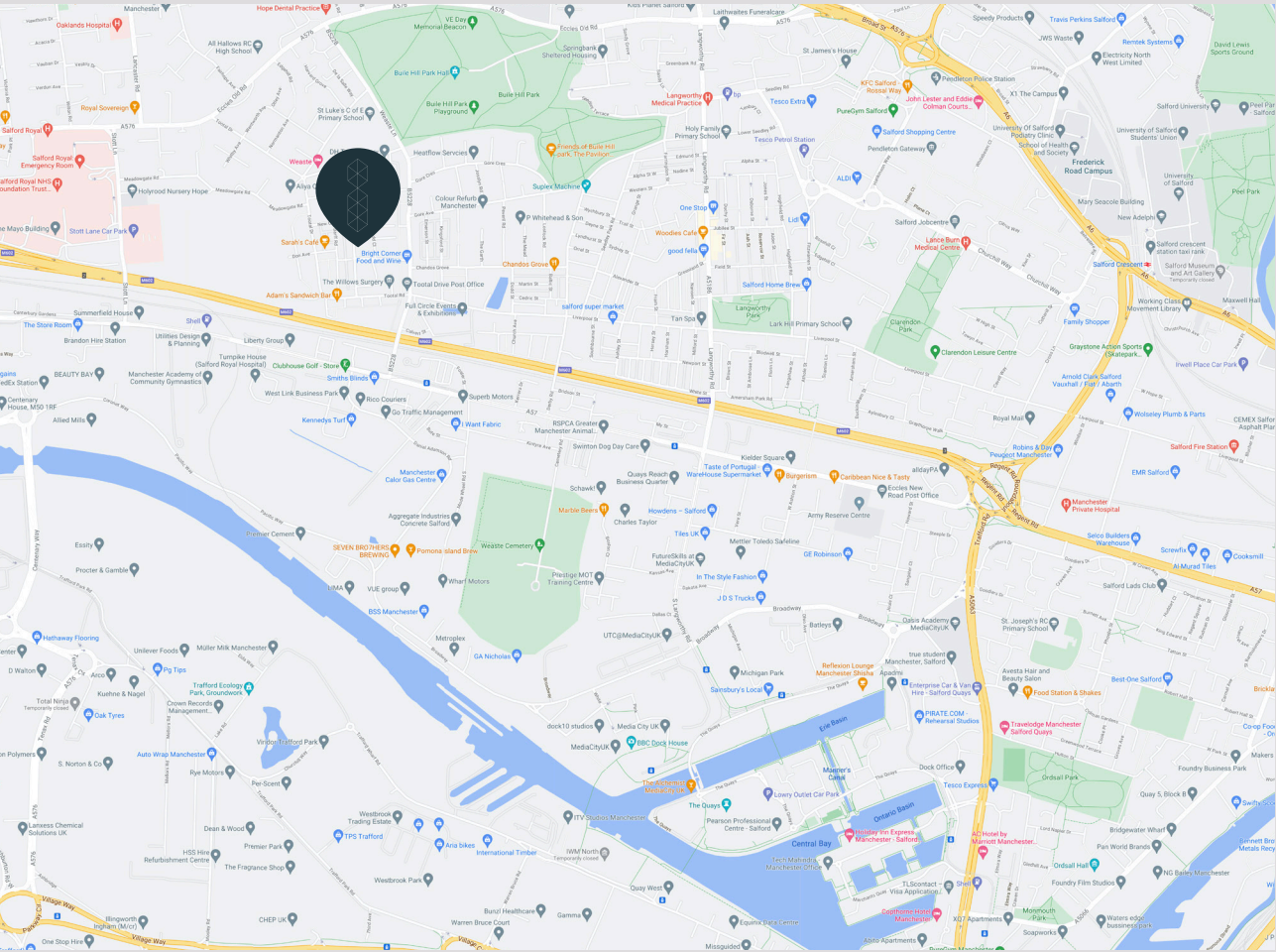
TRACK RECORD
CASE STUDIES

CASE STUDY 1
ADDRESS

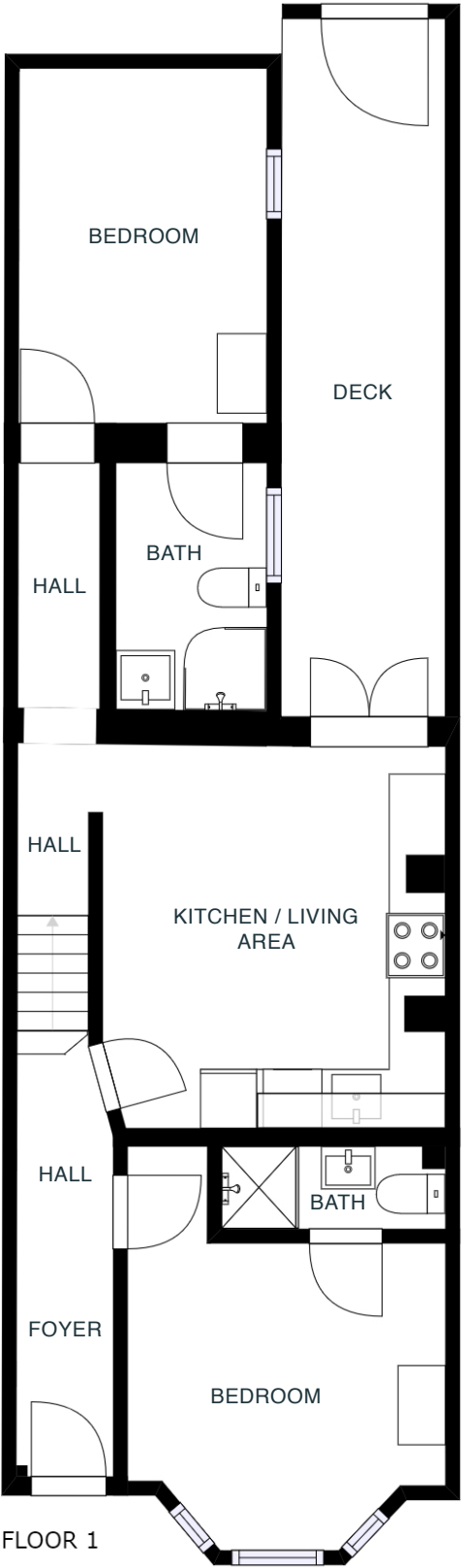
43 Kennedy Road,
Salford, M5 5FT



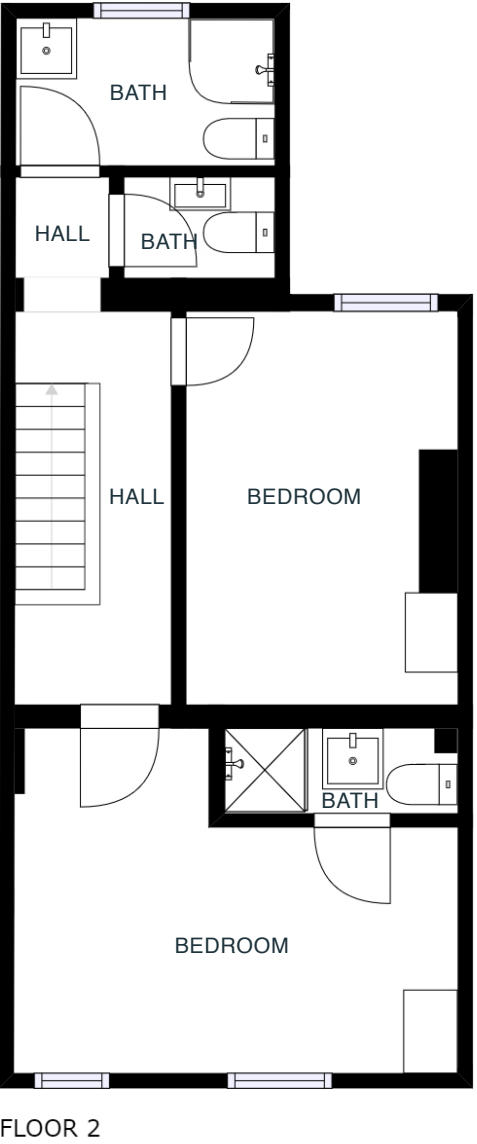
TAKE THE 3D TOUR



Floorplans



GROSS INTERNAL AREA	
FLOOR 1:	556 sq ft, 52 m ²
FLOOR 2:	436 sq ft, 41 m ²
TOTAL:	992 sq ft, 92 m ²
DECK:	129 sq ft, 12 m ²
Sizes and dimensions are approximate, actual may vary	

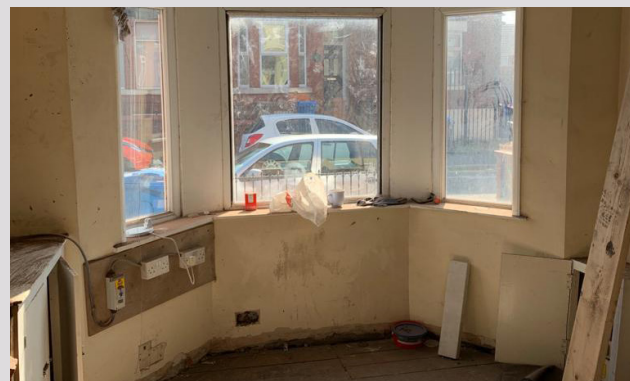




Before renovation



During renovation



After renovation



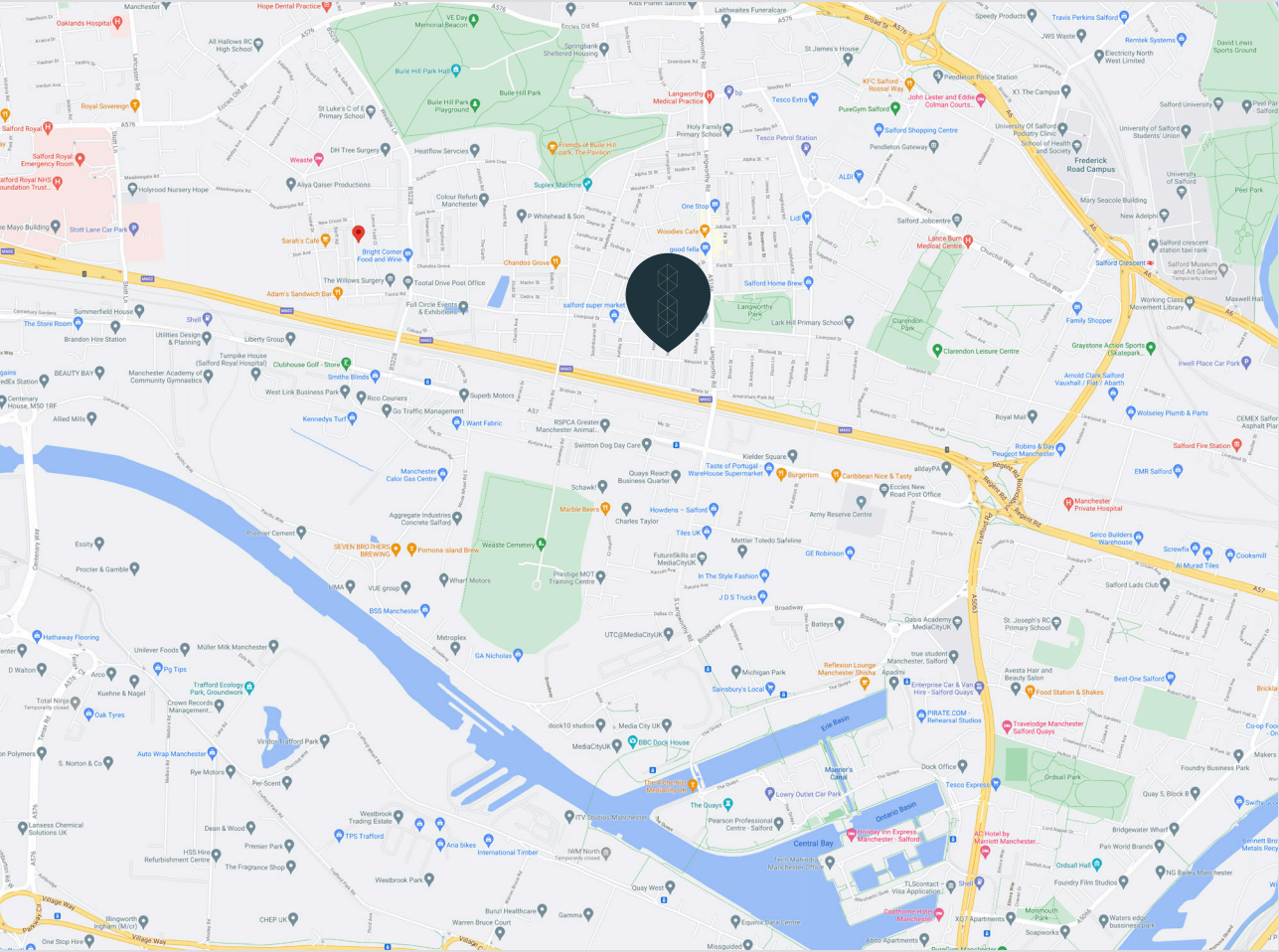


CASE STUDY 2
ADDRESS

28 Horsham
Street, Salford, M6
5QS

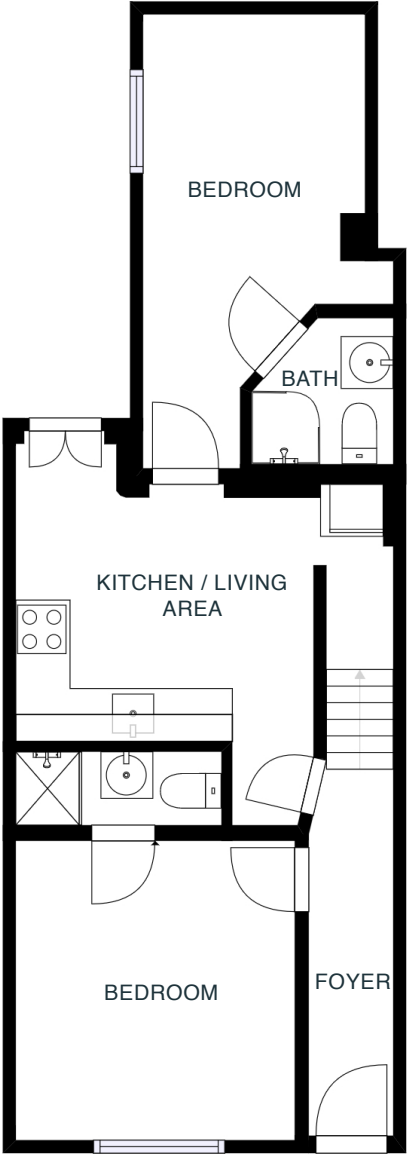


TAKE THE 3D TOUR

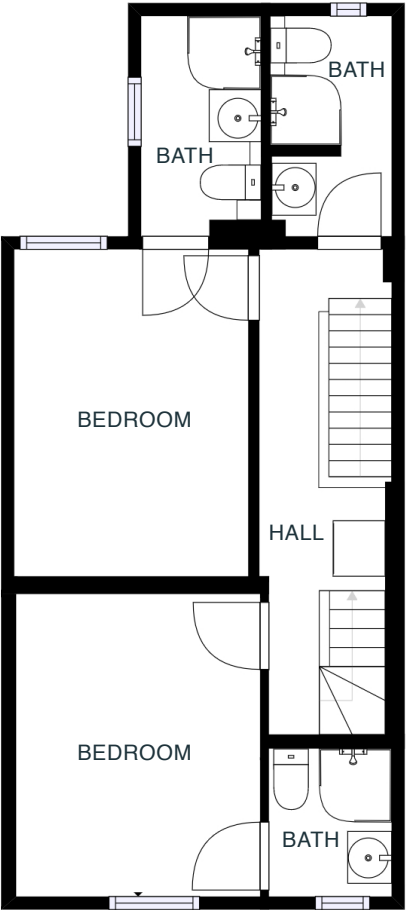


Floorplans

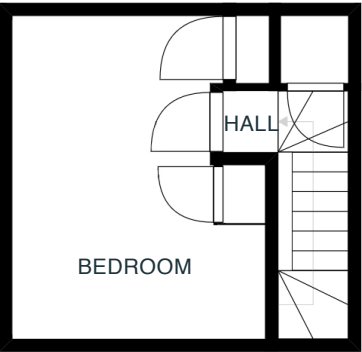
GROSS INTERNAL AREA	
FLOOR 1:	523 sq ft, 49 m ²
FLOOR 2:	434 sq ft, 40 m ²
FLOOR 3:	156 sq ft, 14 m ²
TOTAL:	1113 sq ft, 103 m ²
Sizes and dimensions are approximate, actual may vary	



FLOOR 1



FLOOR 2



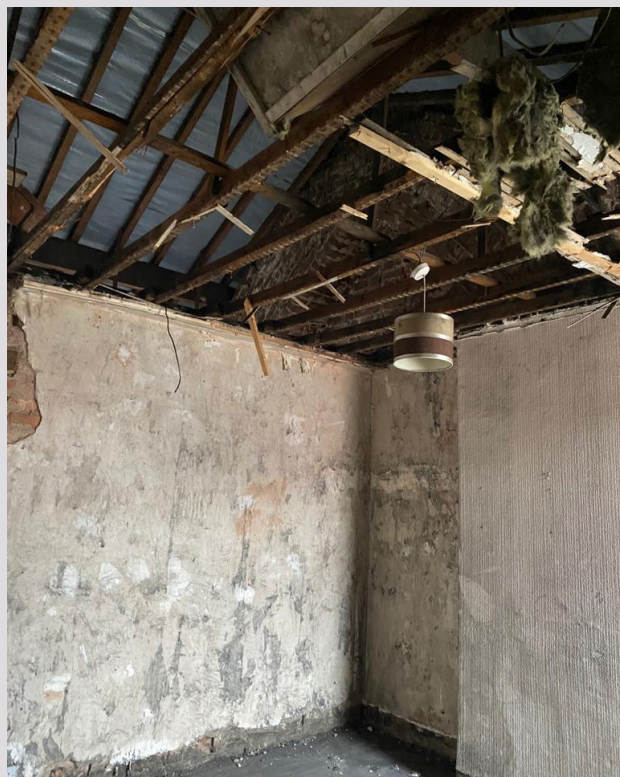
FLOOR 3



Before renovation



During renovation



After renovation



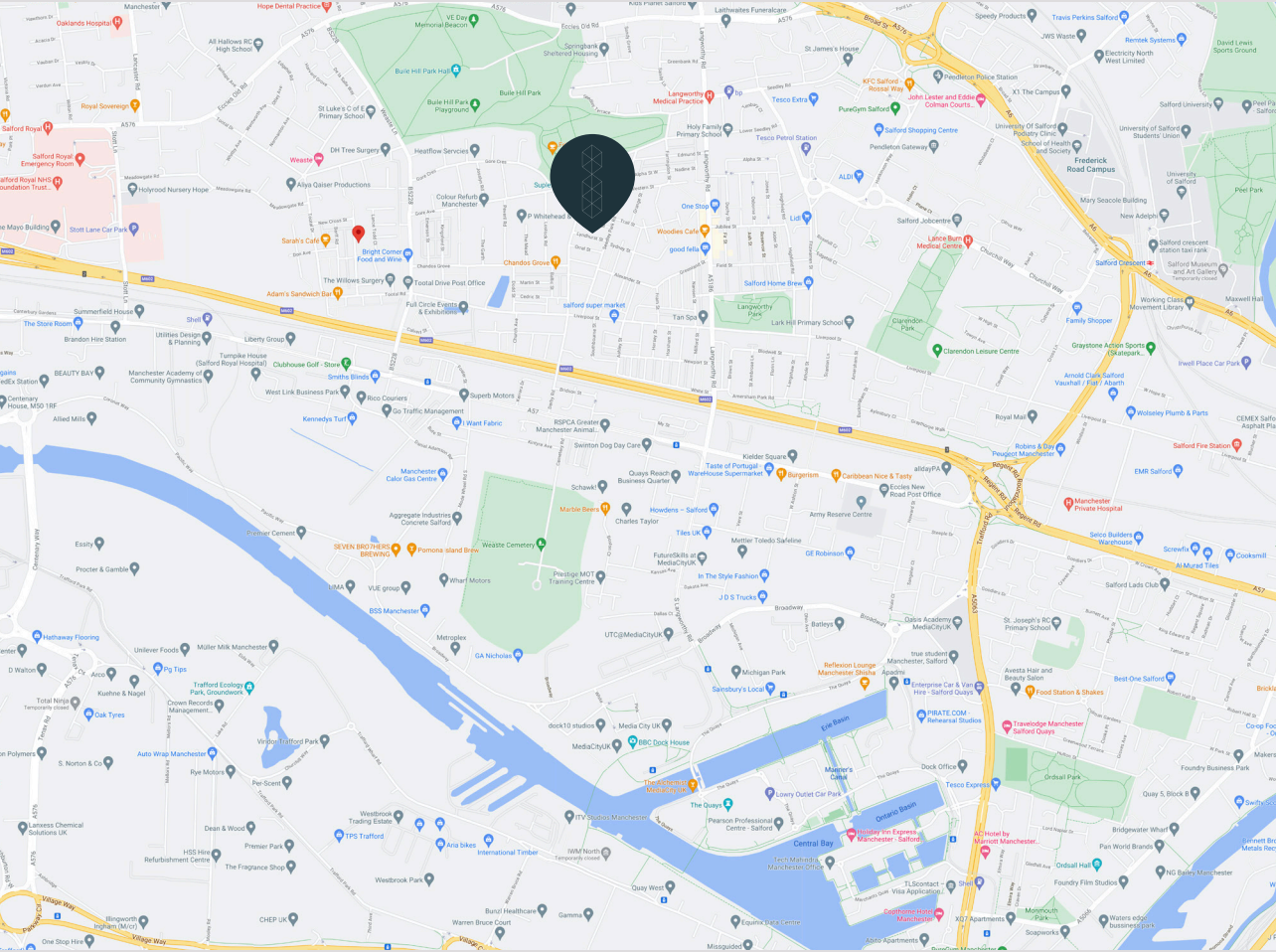


CASE STUDY 3
ADDRESS

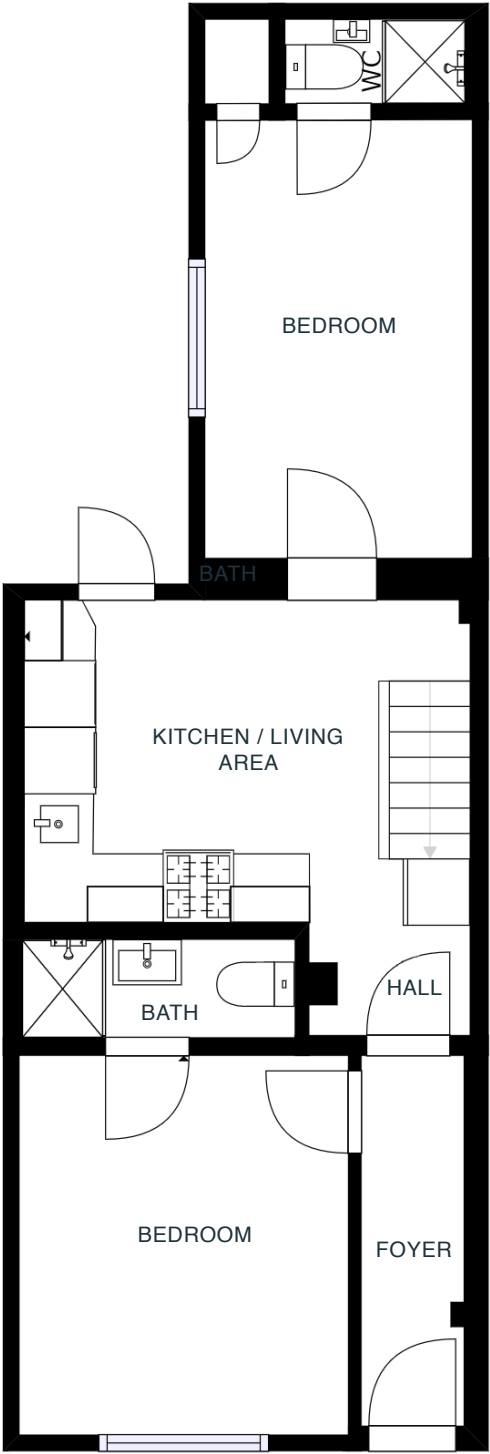
24 Lyndhurst Street,
Salford, M6 5YB



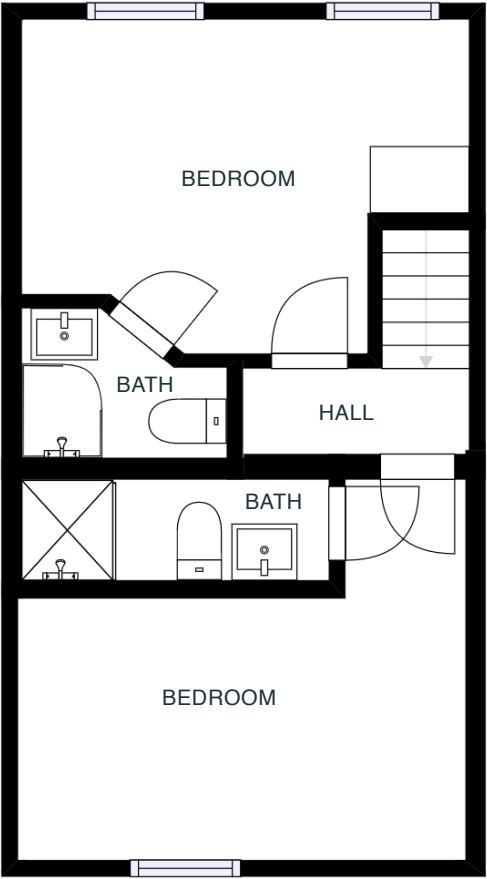
TAKE THE 3D TOUR



Floorplans



FLOOR 1



FLOOR 2

GROSS INTERNAL AREA	
FLOOR 1:	556 sq ft, 52 m ²
FLOOR 2:	436 sq ft, 41 m ²
TOTAL:	992 sq ft, 92 m ²
DECK:	129 sq ft, 12 m ²
Sizes and dimensions are approximate, actual may vary	



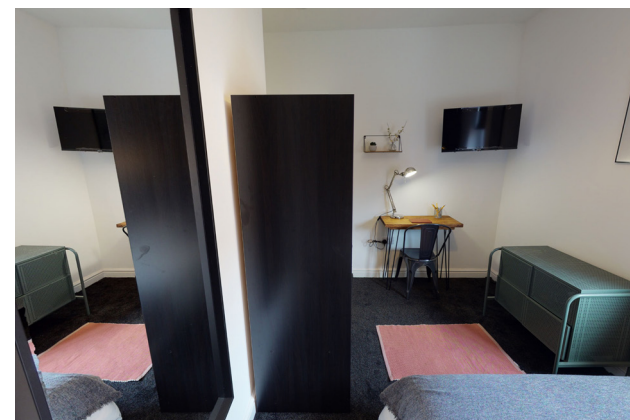
Before renovation



During renovation



After renovation



Elite Resident Investment Ltd
Suite 13
Atrium House
574 Manchester Road
Bury
BL9 9SW
T +44(0) 779 054 0063

